



David Young | P.E.
Principal, Building Science Specialist

Dave specializes in building enclosure consulting relating to new and rehabilitation construction projects. His work includes high- and low-rise commercial, institutional, and residential buildings and his expertise also extends to mission-critical datacenters.

Expertise + Experience

Dave has extensive practical experience with exterior wall, window, above- and below-grade waterproofing and roofing systems from conceptual design through the building enclosure commissioning process.

On new buildings, he reviews architectural drawings and specification packages for building enclosure performance issues related to heat, air, and moisture transfer through the building enclosure. In addition, Dave provides litigation support services related to building enclosure and structural failures. For existing buildings, this work typically involves investigation, design, and construction review and structural related repairs on rehabilitation projects.

Prior to joining RDH in 1999, Dave practiced for 10 years with a structural consulting firm in Ottawa, with the last 3 as manager of the Restoration, Investigation, and Retrofit Division.

Dave is a shareholder and principal of RDH and is committed to the success of RDH projects.

Education

B.Eng., Civil Engineering, Carleton University, Ottawa, ON, Canada

Memberships + Awards

Registered Professional Engineer (P.E.), Oregon

Member, Assoc. of Professional Engineers & Geoscientists of BC

Member, Professional Engineers of Ontario

Past President, Portland Building Enclosure Council

BETEC - Codes and Existing Building Committees

Education Committee Chair, Community Associates Institute, Portland, OR

Member, Construction Specifications Institute, Portland, OR

Typical Projects

CONDITION ASSESSMENTS

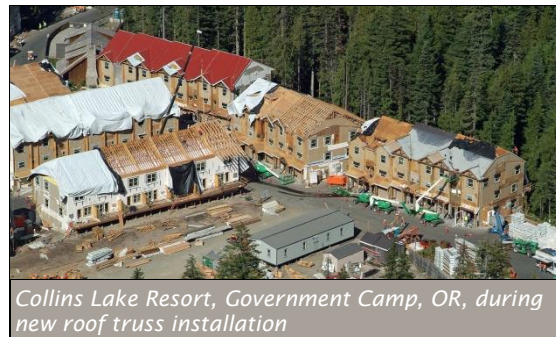
Dave conducts investigations/condition assessments on cladding (fiber-cement siding, stucco, EIFS, masonry, precast concrete, composite panels), roofing, plaza and below-grade water-proofing, windows, and glass/metal curtain wall:

- Morse Federal Courthouse, Eugene, OR
- Collins Lake Resort, Government Camp, OR
- Gregory Lofts Condominiums, Portland, OR
- Riverstone Condominiums, Portland, OR
- Tanner Place Condominiums, Portland, OR
- Sellwood Apartments, Portland, OR
- Covington Commons Apts., Vancouver, WA

REPAIR, RENEWAL + REHABILITATION

Dave provides building enclosure rehabilitation and renovation design and construction field review of cladding, fenestration, plaza waterproofing, and roofing. Some examples include:

- Collins Lake Resort in Government Camp, OR
- Orenco Station Live-Work Townhomes, Hillsboro, OR
- Center for Outpatient Medicine at Salem Hospital, Salem, OR
- Capital Manor, Salem, OR
- Old Main Library, UBC, Vancouver, BC
- National Archives of Canada, Ottawa, ON



Collins Lake Resort, Government Camp, OR, during new roof truss installation



David Young | P.E.

Principal, Building Science Specialist

NEW CONSTRUCTION

Dave has provided building enclosure design review services for many new construction projects. Some examples include:

- Large datacenter projects across the country
- Edith Green Wendell Wyatt Federal Building, Portland, OR – High-rise, high performance curtain wall retrofit
- First & Main, Portland, OR – high-rise office tower
- Indigo, Portland, OR – LEED Platinum, high-rise mixed-use office/residential tower
- The Casey Condominiums, Pearl District, Portland, OR – LEED Platinum, high-rise residential tower
- Atwater, South Waterfront, Portland OR – high-rise residential tower
- The Wyatt, Pearl District, Portland, OR – high-rise residential tower
- The Jeffrey Apartments, Portland, OR – LEED Gold Section 8 Affordable Housing, 6-story wood frame construction with exterior-insulated rainscreen wall assemblies and high-performance PVC windows
- Kruse Oaks III, Lake Oswego, OR – 5-story steel-framed office building



First & Main Office Tower, Portland, OR

FAILURE INVESTIGATION + LITIGATION

Dave regularly provides expert witness and litigation support related to building enclosure performance problems. He is recognized as objective and provides services for both plaintiff and defendant clients as well as acting as a neutral expert. Some examples include:

- Collins Lake Resort Government Camp, OR - investigation of roof snow loading and water ingress issues
- Riverstone Condominiums, Portland, OR - Window leakage issues
- Wyndham Resort, Seaside, OR – 8-story resort hotel complex on the Oregon Coast
- Cascade Manor, Eugene, OR – Investigation and resolution of stucco cladding problems of mid-rise retirement facility
- Vista del Monte, Santa Barbara, CA – Investigation and resolution of premature roofing failure at the pool building of this retirement facility (resolution precluded need for litigation)
- Forest Sciences Centre, University of British Columbia, Vancouver, BC – Premature building enclosure failure investigation
- Space, Vancouver, BC – Investigation and litigation support for the premature building enclosure failure of this high-rise condominium

Select Publications + Presentations

- “Understanding and Implementing the 2014 Oregon Energy Efficiency Specialty Code”, October 4, 2013
- “Building Enclosure Trends – Past, Current and Future”, Portland State University, July 18, 2013
- “Effect of Airtight Building Enclosure in High-Rise Residential Buildings”, BEST3 Conference, Atlanta, GA, April 3, 2012.
- “2010 Oregon Energy Efficiency Specialty Code (OEESC) and beyond – Continuous Insulation Design”, Portland BEC, January 3, 2012.
- “Air Barriers and Constructability Thereof...”, CSI – Eugene Chapter, April 12, 2011
- AAMA Western Region Conference, August 27, 2008
- “Air, Water, and Thermal Barrier Continuity”
- CSI NW Regional Conference, August 27, 2007